

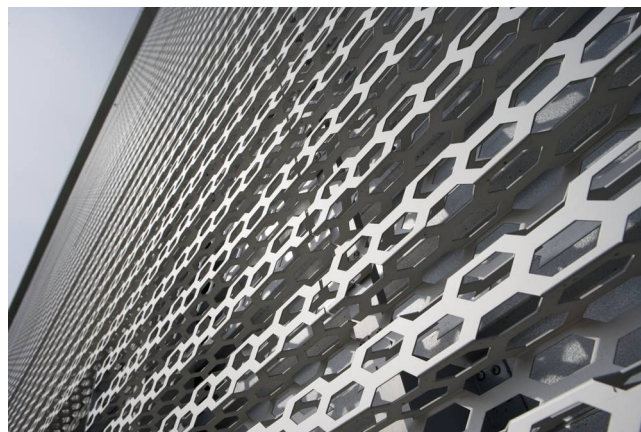


NOUVELLES FAÇADES
NEUE AUDI terminal FASSADE
POUR terminal AUDI
NEW AUDI terminal FACADE
NIEUWE AUDI terminal-GEVELBEKLEDING



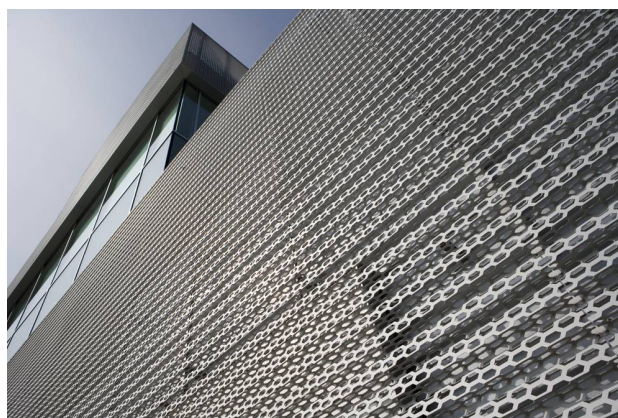
New AUDI terminal facades – Project information

In the next few years, AUDI car dealerships shall have a new homogeneous appearance throughout the whole world: the AUDI terminal – a facade of perforated, bent and anodised aluminium sheets. It is a hexagonal honeycomb perforation uniting both aesthetics and dynamics.



DF is one of Europe's leading manufacturers of perforated plates and sheets with more than 350 employees in the Group (for more information on the company, please visit www.dfgb.de). For more than 100 years, DF has been working in the field of perforated plates and sheets and their further processing.

Focus is also put on the manufacture of perforated sheets for complex facade projects of all kinds.



Mobile AUDI presentation centre



Scope of delivery:

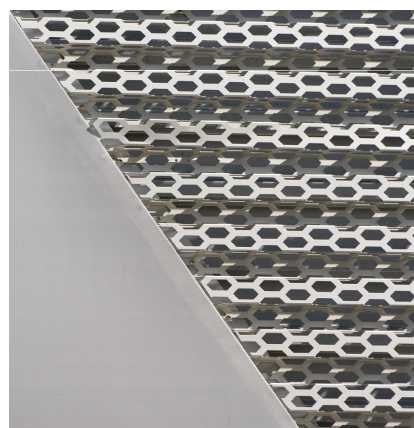
For the AUDI terminals, DF supplies **perforated, anodised aluminium sheets with folded edges** from one source. The manufacture strictly complies with the requirements established by AUDI.

Depending on the customer requirements, there are two delivery options of DF:

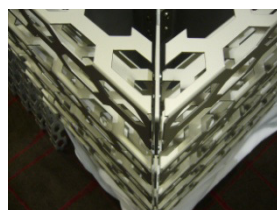
1. Delivery of **rectangular standard panels** which are cut to size by the cladding company on site
2. Delivery of all panels, incl. finished cuts, slopes as well as mitres for corner plates **ready for assembly**

Note: The cuts, curves, mitres etc. are made prior anodising so that all cutting edges are also anodised and thus protected against environmental influences in an optimal way.

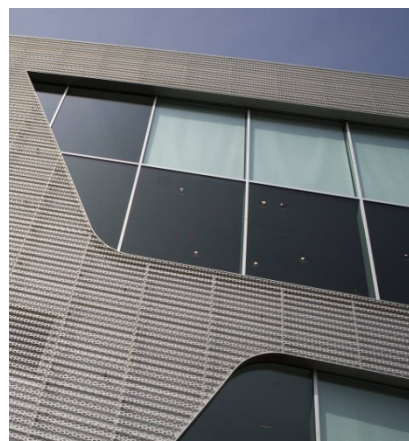
It is the cladding company that finally decides on the execution.



Pictures above: slopes with edging



Pictures left/centre:
Corner pieces with mitre cuts and
toothed blades as protection



Curves



**Samples of realised projects:
(total 200 projects / appr. 150.000 m²)**

Up until now, DF has successfully delivered perforated sheets for the following AUDI terminal projects:

Germany

- AUDI Frankfurt (6600 m²)
- AUDI Berlin (5000 m²)
- AUDI Munich (2000 m²)
- AUDI Dresden (1000 m²)
- AUDI Mobile presentation center Davos
- AUDI Lichtenberg (1500 m²)
- AUDI Leipzig (840 m²)
- AUDI Gera (400 m²)
- AUDI Vechta (500 m²)
- AUDI Fürstenwald (560 m²)
- AUDI Weißensee (570 m²)
- AUDI Brass Dietzenbach (455 m²)
- AUDI Stuttgart (3600 m²)
- AUDI Fulda (700 m²)
- AUDI Füssen (700 m²)
- AUDI Neuburg (1000m²)
- AUDI Köln (950 m²)
- AUDI Eching (1400 m²)
- AUDI Magdeburg (350 m²)



AUDI Munich



Rear side

France

- AUDI Limonest / Lyon (2100m²)
- AUDI Seynod / Annecy (1100m²)
- AUDI Ville la Grand (500 m²)
- AUDI Ferney Voltaire (470 m²)
- AUDI Dunkerque (430 m²)
- AUDI Tarbes (240 m²)
- AUDI Valence (470 m²)
- AUDI Laval (470 m²)
- AUDI Boulogne sur Mer (300 m²)
- AUDI Vannes (550 m²)
- AUDI Terville (280 m²)
- AUDI Trélissac (360 m²)
- AUDI Puget (430 m²)
- AUDI Vire (400 m²)
- AUDI Béziers (580 m²)
- AUDI Bayonne (300 m²)
- AUDI St. Brieuc (450 m²)
- AUDI Beaucouzé (650 m²)
- AUDI Nîmes (520 m²)
- AUDI Chalon sur Saône (300 m²)



France (follow up)

AUDI Cholet (350 m²)
AUDI Bruay-sur-l'Escaut (700 m²)
AUDI Brives-La-Gaillarde (500 m²)
AUDI Pamiers (400 m²)
AUDI Orvault (630 m²)
AUDI Echirolles / Grenoble (450 m²)
AUDI St. Victoret / Marseille (580 m²)
AUDI Chenove (800 m²)
AUDI Narbonne (300 m²)
AUDI Toulon La Garde (1250 m²)
AUDI Reims (570 m²)
AUDI Bourgoin Jallieu (450 m²)
AUDI Epinal (500 m²)
AUDI Saint Maximin (600 m²)
AUDI St Lo (450 m²)
AUDI Jaux (320 m²)
AUDI Le Coteau (200 m²)
AUDI Mouilleron le Captif (425 m²)
AUDI Nevers (220 m²)
AUDI Trignac (510 m²)
AUDI Lanester (780 m²)
AUDI Carcassonne (300 m²)
AUDI Mortefontaine (500 m²)
AUDI Macon (300m²)
AUDI Saint Priest en Jarez (850 m²)
AUDI Saint Paul les Dax (450 m²)



Holland

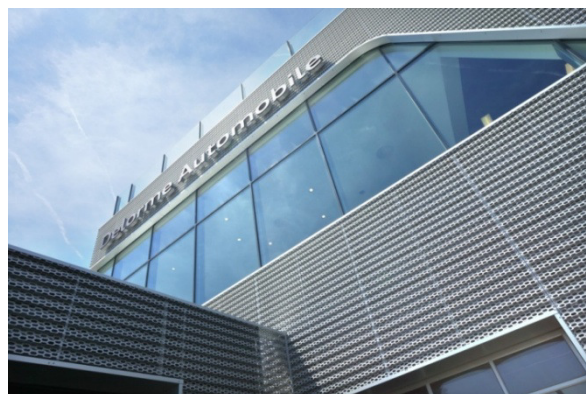
AUDI Eindhoven (700 m²)
AUDI Kantsingel (150 m²)
AUDI Gouda (800 m²)
AUDI Dordrecht (65 m²)
AUDI Leeuwarden (350 m²)
AUDI Zeist (700 m²)

Belgium

AUDI Kortenberg (800 m²)
AUDI Lanklaar (560 m²)
AUDI Heremans (120 m²)
AUDI Ternat (90 m²)
AUDI Fosses la Ville (720 m²)
AUDI Hasselt (2200 m²)

Italy

AUDI Bolzano (facade model)
AUDI Firenze (700 m²)
AUDI Caserta (480 m²)
AUDI Fornasier (510 m²)





Sweden

AUDI Smista (1000 m²)
AUDI Värnamo (500 m²)
AUDI Uddevalla (380 m²)
AUDI Västerås (800 m²)

Slovakia

AUDI Bratislava (2400 m²)
AUDI Zilina (350 m²)
AUDI Trenčín (500 m²)

Other European countries

AUDI Madrid, Spain* (2200 m²)
AUDI Dudelange, Luxemburg (500 m²)
AUDI Prague, Czech Republic (440 m²)
AUDI Kyjov, Czech Republic (560 m²)
AUDI Zagreb, Croatia (1500 m²)
AUDI Budapest, Hungary (720 m²)
AUDI Vienna, Austria (570 m²)
AUDI Molde, Norway (40 m²)
AUDI Kristiansand, Norway (600 m²)
AUDI Dübendorf, Switzerland (2100 m²)
AUDI Horgen, Switzerland (700 m²)
AUDI Winterthur, Switzerland (1380 m²)
AUDI Charkow, Ukraine (550 m²)
AUDI Lviv, Ukraine (620m²)
AUDI Odessa, Ukraine (650 m²)
AUDI Nass, Ireland (560 m²)
AUDI Sligo, Ireland (500 m²)
AUDI Waterford, Ireland (900 m²)
AUDI Dublin, Ireland (800 m²)
AUDI Bucarest, Romania (800m²)



AUDI Bratislava

Non-European countries

AUDI Cairo, Egypt (1800 m²)
AUDI Mexico (900 m²)
AUDI Martinique (400 m²)
AUDI Tunis, Tunisia (370 m²)
AUDI Toronto, Canada (800 m²)
AUDI Laval, Canada (700 m²)
AUDI Calgary, Canada (850m²)
AUDI Polokwane, South Africa (1000 m²)

Until today DF has realised the most Audi terminal projects world wide.

These projects have been realised in close cooperation with architects and responsible cladding companies. DF stuck to its core competencies - perforating, bending, anodising - and supplied this scope of delivery to the cladding companies. The substructure and assembly of the plates have so far been realised by the cladding companies or general contractors.

All projects have been carried out without any trouble to our customers' utmost satisfaction.



Substructure

The substructure was realised by the responsible cladding companies on site; it is simple and easy to install:

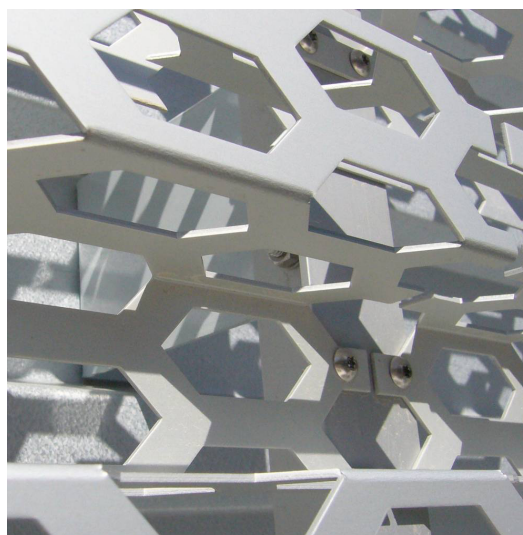
1. Screwing the aluminium sheets to the existing or newly produced substructure (corrugated sheet and/or profiled sheet).
Screwing the perforated panels to the aluminium beams
2. Riveting aluminium profiles to the bottom plates
Riveting the perforated plates to the aluminium beams

Depending on the planning, the screwing of the aluminium profile was carried out either on or between the corrugations of the bottom plates.

Both alternatives are checked and applicable under static aspects and offer a high degree of flexibility for adaptations on site.



Example: Substructure with screwed aluminium profile angles on bottom plate facade



Example: Perforated panel screwed on aluminium profile



Example: Aluminium profile riveted on bottom plate and perforated panel riveted on aluminium beam



Delivery times:

Thanks to our company size we are able to deal with several, even bigger, AUDI terminal projects at the same time without any troubles.

Depending on the quantity of projects, the **delivery times vary from 8-10 weeks.**

With already successfully realised projects and our experience we consider ourselves being your reliable and competent partner for your AUDI terminal project. We guarantee strict adherence to delivery dates and excellent quality.

We would be very glad working with you.

On the following pages, you will find some additional technical information on the perforated sheets for the AUDI terminals. If you have any questions, please contact:

Mr Franck Hertzog

Tel: 0049 6831 7003 562

Fax: 0049 6831 7003 525

Mail: fhertzog@dfvertrieb.de

Mr Rached Fitouri

Tel: 0049 6831 7003 530

Fax: 0049 6831 7003 525

Mail: rfitouri@dfvertrieb.de

DF Lochbleche GmbH & Co. KG

Franz Meguin Str. 20

D- 66763 Dillingen

Tel: 0049 6831 7003 0

Fax: 0049 6831 7003 525

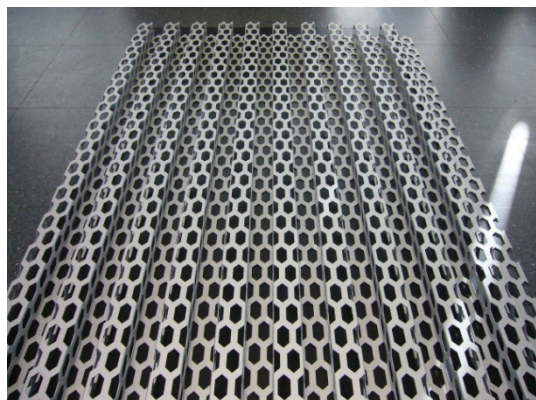
www.dfgb.de

info@dfgb.de

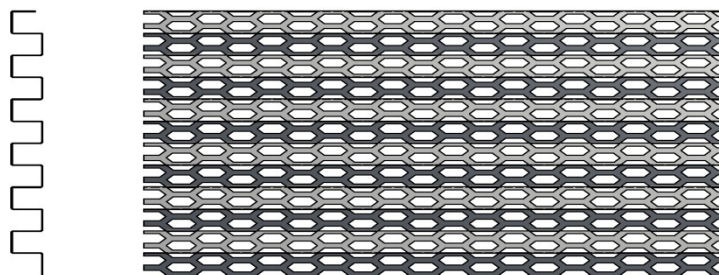


Technical data of perforated sheets for AUDI terminal

Material:	EN AW 5005
Thickness:	2 mm
Standard dimension:	
Plate dimension:	758 x 2494 mm
Laying size:	750 x 2500 mm
Other dimensions:	acc. to measurements and drawings
Perforation:	hexagonal honeycombs 26 x 61.5 mm
Surface treatment:	anodised E 6 EV 1 layer thickness 25 μ
Plate design:	perforated, bent
Bending:	
Bending axis:	62.5 mm
Edge width:	64.5 mm

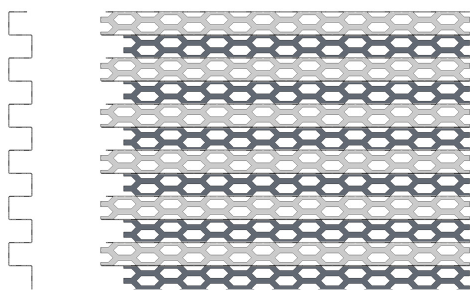


Standard panel 758 x 2494 mm

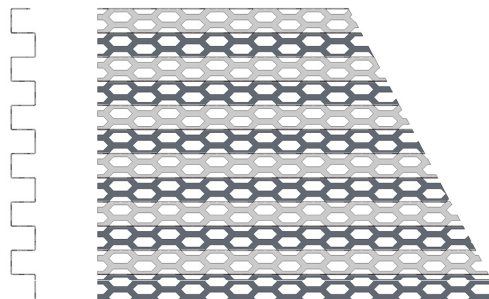


Standard panel

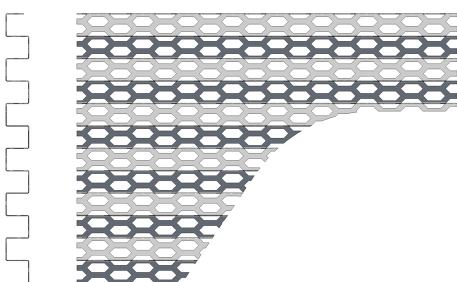
Mitre cuts for corners



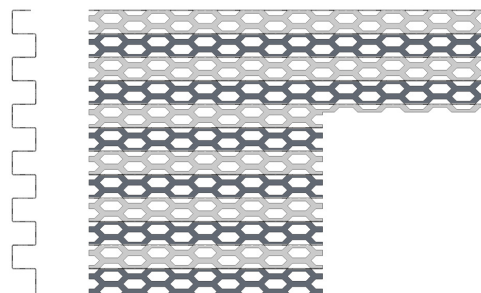
Slopes

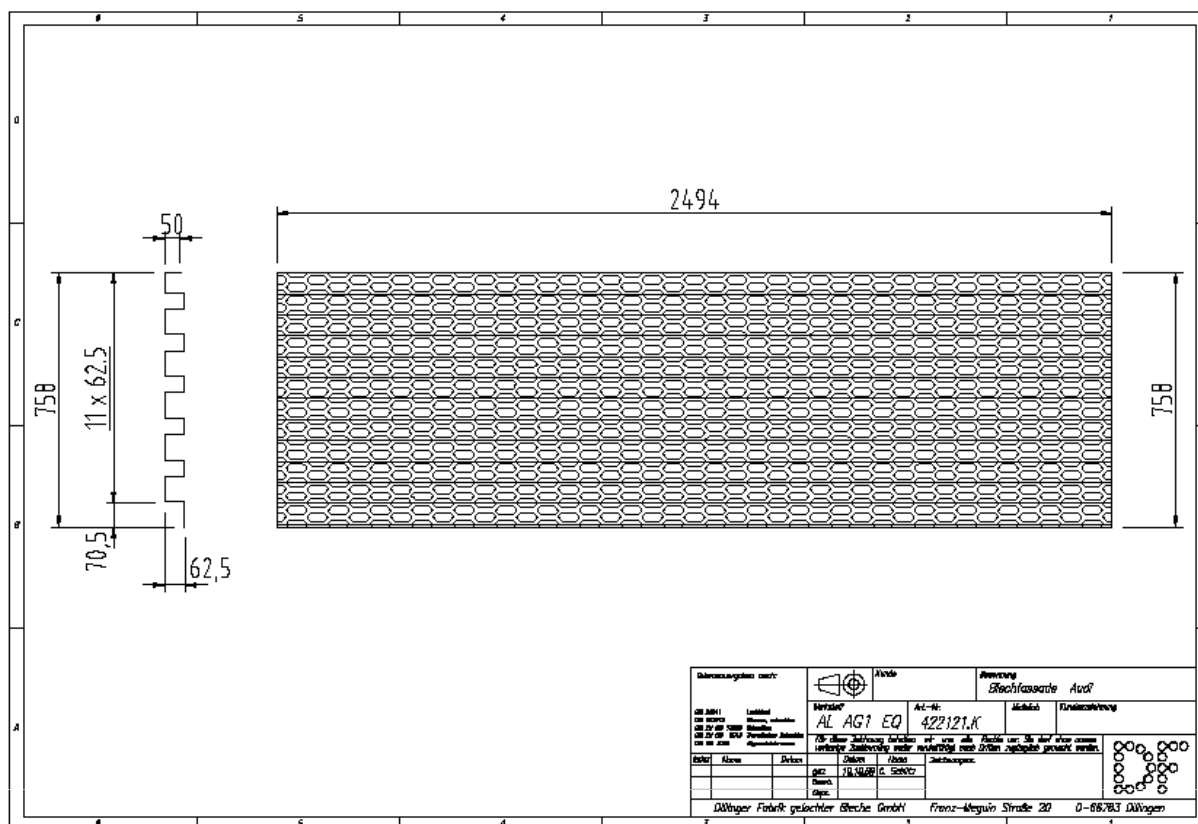


Curves



Cuts for doors, etc.





Dimensions of bent standard panel